

Notes & Points for LPCxxx Flash memory

DTS INSIGHT CORPORATION

- (1) No part of this manual may be reproduced or transmitted in any form or by any means, electronic or mechanical, without the written permission of DTS INSIGHT CORPORATION.
- (2) The contents of this manual are subject to change without prior notice due to improvement of the functionality.
- (3) If any question about the contents of this manual arises, contact DTS INSIGHT CORPORATION.
- (4) DTS INSIGHT CORPORATION shall not be held responsible for direct or indirect adverse effects resulting from operation of this system irrespective of the above item (3).
- (5) Product and company names mentioned in this manual are the trademarks of their respective owners.

Revision History

Edition	Date of issue	Description
First Edition	January 31, 2012	• Initial publication

Contents

1	Introduction	5
2	Supported SLX(ZX) Versions	5
3	Advance Preparation	5
3.1	If Nothing is Recorded on the Built-in Flash Memory (Cortex-M series).....	5
3.2	Memory Map of the Vector Area	6
4	Flash Memory I/F Type.....	7
5	User RAM for ICE	7
6	Not Supported Functions	7

1 Introduction

This manual describes notes and points especially for writing to Flash memory.

For details of ICE operating instructions, see the microVIEW-PLUS User's Manual (Common Edition) and microVIEW-PLUS User's Manual (MPU-Specific Edition).

2 Supported SLX(ZX) Versions

SLX600 Rev.2.11 or later is supported.

ZX600 Rev.5.10 is not supported.

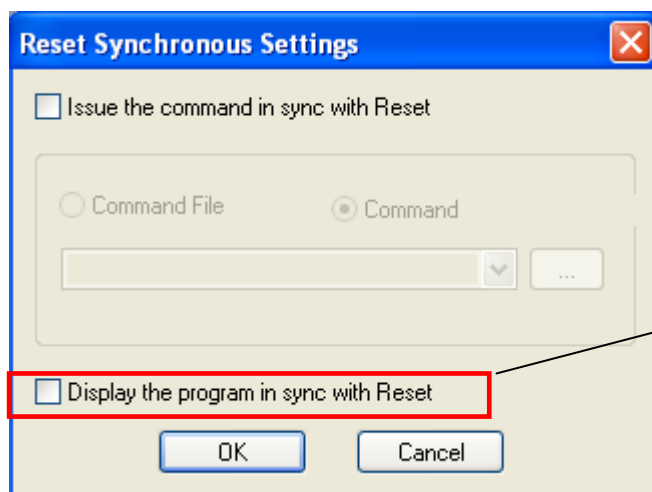
3 Advance Preparation

3.1 If Nothing is Recorded on the Built-in Flash Memory (Cortex-M series)

microVIEW-PLUS dumps a reset vector area to display a program (disassemble display) after connecting by reset commands. In case you are using Cortex-M series cores and nothing is recorded in the built-in flash memory (a vector table is 0xFFFFFFFF), 0xFFFFFFFFE will be dumped and "ICE Error No.f58: Sticky error" may occur.

[Provision]

Right-click the Reset button on the toolbar, and then open the Reset Sync. Setting dialog box.



Clear the "Display the program in sync with Reset" check box.
(= does not dump by the reset command)

After downloading the program to the built-in flash memory (correct vector table values are written), select this check box again.

3.2 Memory Map of the Vector Area

If the vector area is not mapped on the Flash area, writing on the vector area may be incorrect. In such cases, change the mode to “User Flash Mode” and then write the flash memory again.

(The settings vary depending on your Soc. For details, see manuals for your Soc.)

Setup Example

LPC Series	Setup command
LPC11xx	mem I #0x40048000 = 0x2
LPC13xx	mem I #0x40048000 = 0x2
LPC23xx	mem I #0xE01FC040 = 0x1

4 Flash Memory I/F Type

Use 32bit x 1 for the flash memory I/F type.

5 User RAM for ICE

Make sure to set the memory mapping of the user RAM for ICE.

6 Not Supported Functions

Following functions are not supported.

- Flash memory download without setting the RAM for ICE
- Software break in Flash memory (Use OCD break instead)
- Sector erase function