

STM32Fxxx Internal Flash Memory Instructions Manual

DTS INSIGHT CORPORATION

- (1) No part of this manual may be reproduced or transmitted in any form or by any means, electronic or mechanical, without the written permission of DTS INSIGHT CORPORATION.
- (2) The contents of this manual are subject to change without prior notice due to improvement of the functionality.
- (3) If any question about the contents of this manual arises, contact DTS INSIGHT CORPORATION.
- (4) DTS INSIGHT CORPORATION shall not be held responsible for direct or indirect adverse effects resulting from operation of this system irrespective of the above item (3).
- (5) Product and company names mentioned in this manual are the trademarks of their respective owners.

© 2012 DTS INSIGHT CORPORATION. All Rights Reserved.

Printed in Japan

Revision History

Edition	Date of issue	Description
1st Edition	May. 31, 2012	<ul style="list-style-type: none">• Initial publication
2nd Edition	Jul. 31, 2012	<ul style="list-style-type: none">• Description for STM32F2/F4Flash Software break is added.
3rd Edition	Sep. 30, 2012	<ul style="list-style-type: none">• Description for STM32F0 is added.
4th Edition	Dec. 10, 2013	<ul style="list-style-type: none">• Description for advice LUNA II is added.• Errata are corrected

Contents

1	Introduction	5
2	Supported Install kit CD Versions	5
3	Advance Preparation	6
3.1	If Nothing is Recorded on the Built-in Flash Memory	6
3.2	MPU-specific Debug Control Register	7
3.3	Settings for when ETM is disabled	10
3.4	Changing I/F to connect.....	11
4	Setting the Memory Mapping	12
4.1	Setting up Flash Memory Mapping	12
4.2	Setting up User RAM for ICE	13
5	Download to Flash Memory	14
6	Software Break in Flash Memory.....	14
7	Notes & Points.....	15
7.1	For STM32F2/STM32F4	15
7.1.1	If the Debugger behavior is Slow when using a Flash Software Break.....	15
7.1.2	For When a Time-out Error occurs	16

1 Introduction

This is a brief manual for writing to Internal flash memory.

For details of ICE operating instructions, see the microVIEW-PLUS User's Manual (Common Edition) and microVIEW-PLUS User's Manual (MPU-Specific Edition).

2 Supported Install kit CD Versions

Device Model	Supported Versions		
	H2X600IK	SLX600	ZX600
STM32F1	1.01 or later	1.00 or later	3.10 or later
STM32F2/F4	1.01 or later	2.13 or later*	--
STM32F0	1.01 or later	2.16 or later	--

* For Flash software break, SLX600 Rev 2.14 or later is necessary.

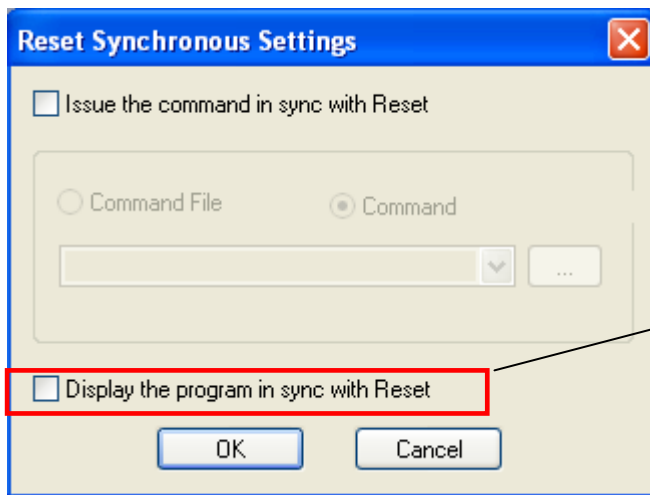
3 Advance Preparation

3.1 If Nothing is Recorded on the Built-in Flash Memory

microVIEW-PLUS dumps a reset vector area to display a program (disassemble display) after connecting by reset commands. In case you are using Cortex-M series cores and nothing is recorded in the built-in flash memory (a vector table is 0xFFFFFFFF), 0xFFFFFFFFE will be dumped and “ICE Error No.f58: Sticky error” may occur.

[Provision]

Right-click the Reset button on the toolbar, and then open the Reset Synchronous Setting dialog box.



Clear the “Display the program in sync with Reset” checkbox.
(= does not dump by the reset command)

After downloading the program to the built-in flash memory (correct vector table values are written), select this checkbox again.

3.2 MPU-specific Debug Control Register

In some cases, Cortex-M series core has a debug control register outside of the core. In this case, start debugging after setting the debug specific control register.

(MPU → MPU-Specific Setting → Synchronous memory operation)

Without settings, you may not be able to perform debug operation successfully.

The followings are setting examples.

*** Modify the settings as required.**

*** For details, see technical reference manuals for each MPU.**

1. Setup example for STM32F0xxx.

Settings

DBG_STANDBY=1: Debug Standby mode.

DBG_STOP=1: Debug Stop mode.

DBG_SLEEP=1: Debug Sleep mode.

DBG_IWDG_STOP=1: Debug independent watchdog stopped when core is halted.

DBG_WWDG_STOP=1: Debug Window Watchdog stopped when Core is halted.

The screenshot shows the 'MPU-Specific Settings' dialog box with the 'Synchronous memory operation' tab selected. The 'Execution timing' is set to 'After Reset'. The configuration is as follows:

Sequence	Address	Data	Attribute
Sequence-1	0x40015804	0x7	Write- 32bit
Sequence-2	0x40015808	0x1800	Write- 32bit
Sequence-3	0x0	0x0	Not Use
Sequence-4	0x0	0x0	Not Use
Sequence-5	0x0	0x0	Not Use

Callouts from the image provide the following instructions:

- Select **After Reset** (pointing to the Execution timing dropdown).
- Set "0x7" for Debug specific control register (DBGMCU_CR: 0x40015804). Set "Write- 32bit". (pointing to the Data field of Sequence-1).
- Set "0x1800" for Debug specific control register (DBGMCU_APB1: 0x40015808). Set "Write- 32bit". (pointing to the Data field of Sequence-2).

2. Setup example for STM32F1xxx.

Settings

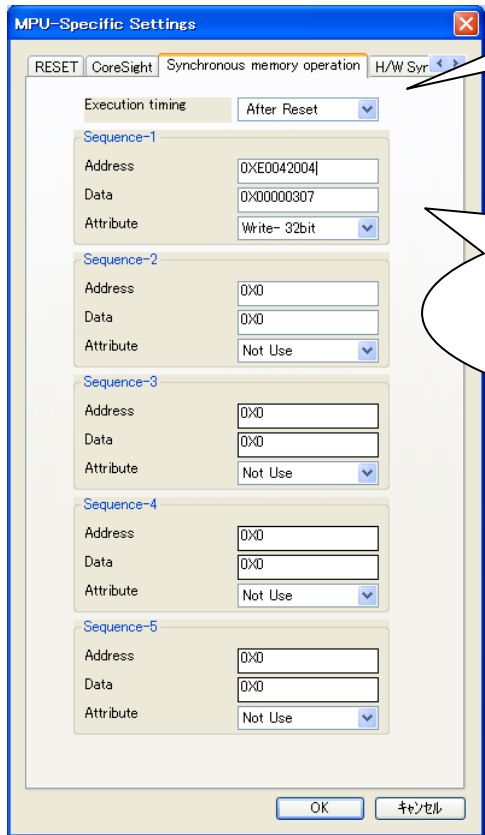
DBG_IWDG_STOP=1: Debug independent watchdog stopped when core is halted.

DBG_WWDG_STOP=1: Debug Window Watchdog stopped when Core is halted.

DBG_STANDBY=1: Debug Standby mode.

DBG_STOP=1: Debug Stop mode.

DBG_SLEEP=1: Debug Sleep mode.



The screenshot shows the 'MPU-Specific Settings' dialog box. The 'Execution timing' dropdown is set to 'After Reset'. Under 'Sequence-1', the 'Address' field contains '0xE0042004', the 'Data' field contains '0x00000307', and the 'Attribute' dropdown is set to 'Write- 32bit'. The other sequences (2-5) have 'Address' set to '0x0', 'Data' set to '0x0', and 'Attribute' set to 'Not Use'. There are 'OK' and 'キャンセル' buttons at the bottom.

Select **After Reset**

Set "0x307" for Debug specific control register (DBGMCU_CR: 0xe0042004).
Set "Write- 32bit".

3. Setup example for STM32F2xxx/ STM32F4xxx.

Settings

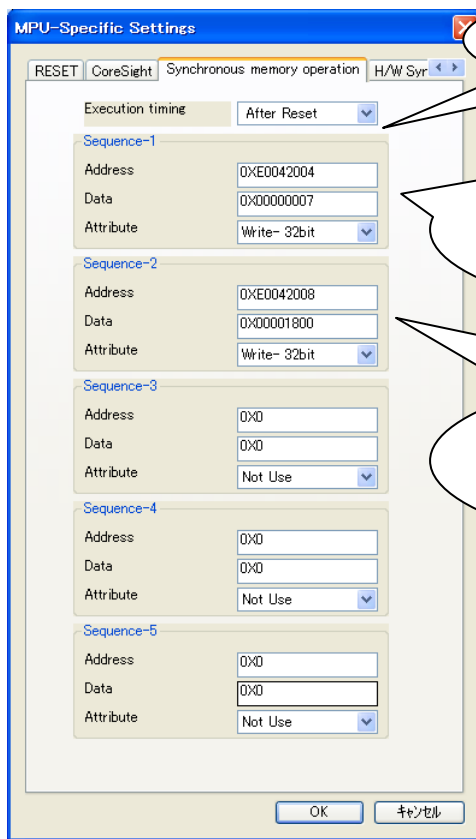
DBG_STANDBY=1: Debug Standby mode.

DBG_STOP=1: Debug Stop mode.

DBG_SLEEP=1: Debug Sleep mode.

DBG_IWDG_STOP=1: Debug independent watchdog stopped when core is halted.

DBG_WWDG_STOP=1: Debug Window Watchdog stopped when Core is halted.



Select **After Reset**

Set "0x7" for Debug specific control register (DBGMCU_CR: 0xe0042004).
Set "Write- 32bit".

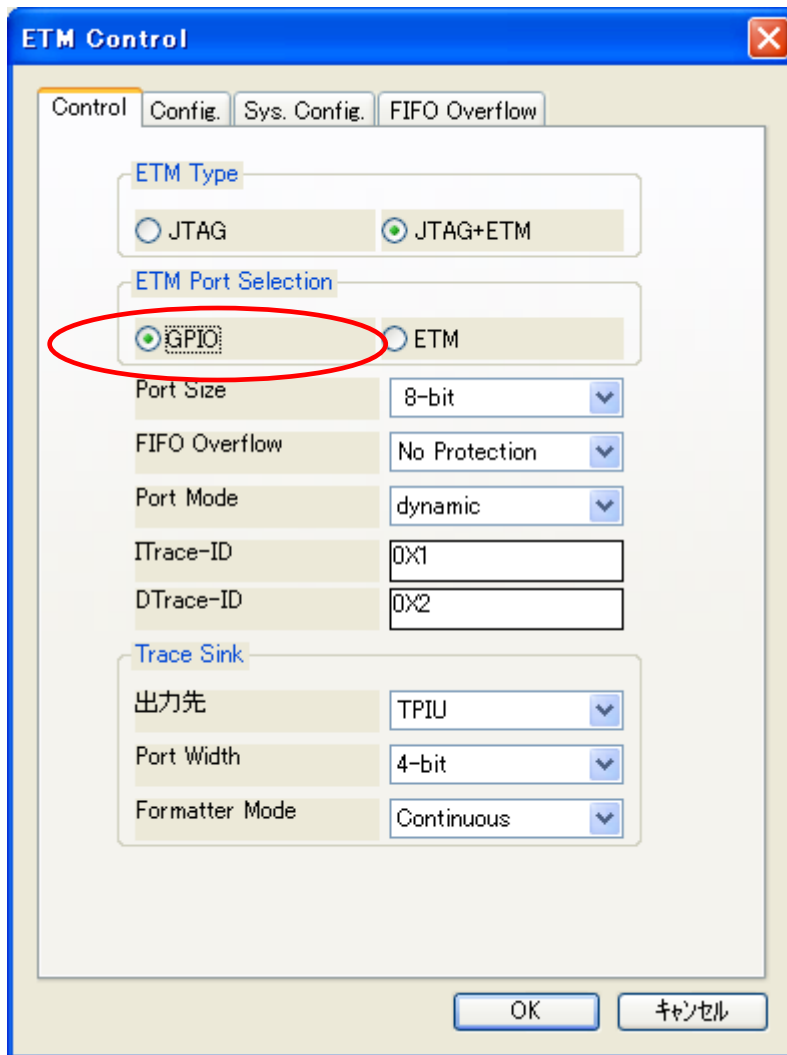
Set "0x1800" for Debug specific control register (DBGMCU_APB1: 0xe0042008).
Set "Write- 32bit".

3.3 Settings for when ETM is disabled

When “ETM Type” setting is “JTAG”, this setting is unnecessary.

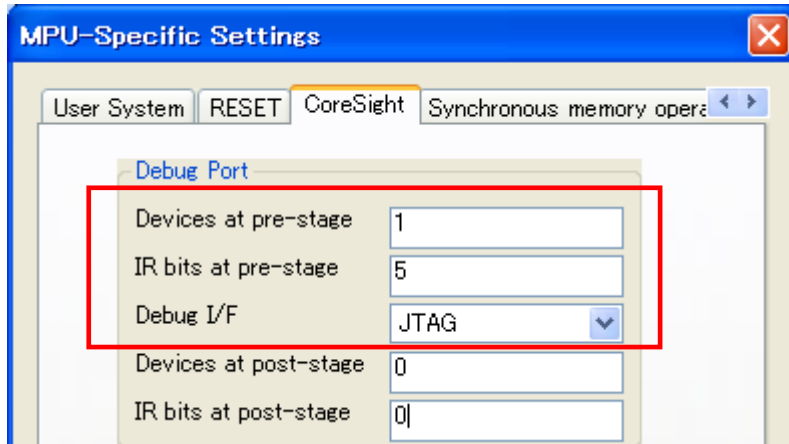
When the ETM setting of the board is invalid, please set “GPIO” for “ETM Port Selection”.

MPU → ETM Control



3.4 Changing I/F to connect

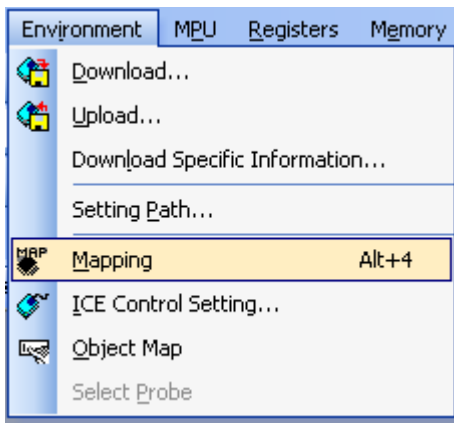
In case the debugger operation in SWD is unstable, switch it to JTAG I/F. Set the number of bypass TAP at pre-stage and the number of IR register bit at pre-stage then.



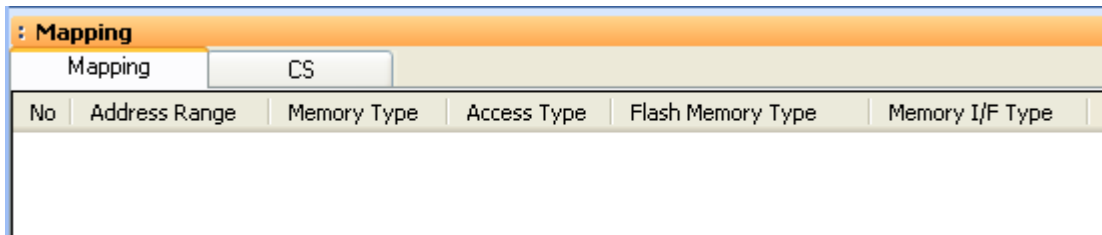
4 Setting the Memory Mapping

4.1 Setting up Flash Memory Mapping

Open the memory mapping window by clicking **Environments – Mapping**.

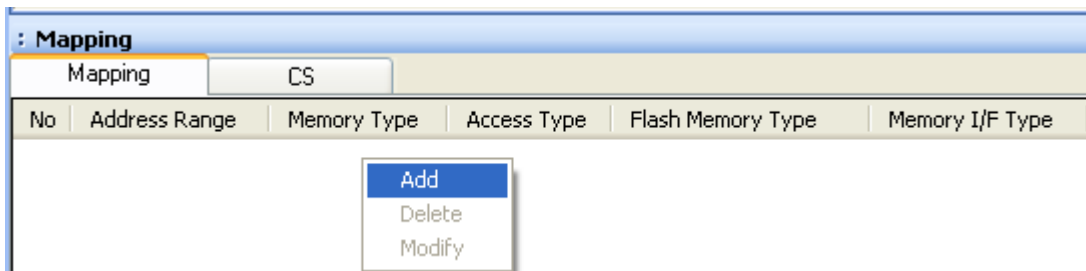


Memory map window as below is opened.

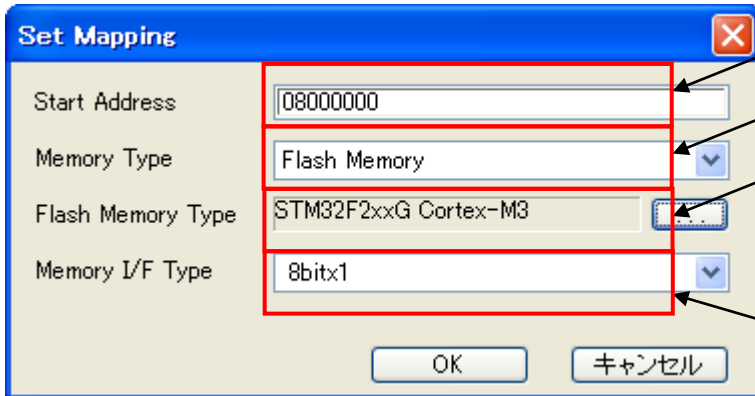


Set the mapping.

Right-click on the memory mapping window, and then select **Add**.



Configure the setting as the example below.



Start address of built-in flash memory
Using 0x08000000 as an example here.

Select **Flash memory**

Select **model name.frd** file. *
Using STM32F2xx as an example here.

*1

*1 Set as follows:

MPU	Setting value
STM32F0/F1	16bitx1
STM32F2/F4	8bitx1 *2

***2 Default configuration is 8bitx1. If the behavior like flash software break is slow, depending on the environment of user system, you can make it faster by changing the settings. For details, see Section 7.1.1 “If the Debugger behavior is Slow when using a Flash Software Break”.**

4.2 Setting up User RAM for ICE

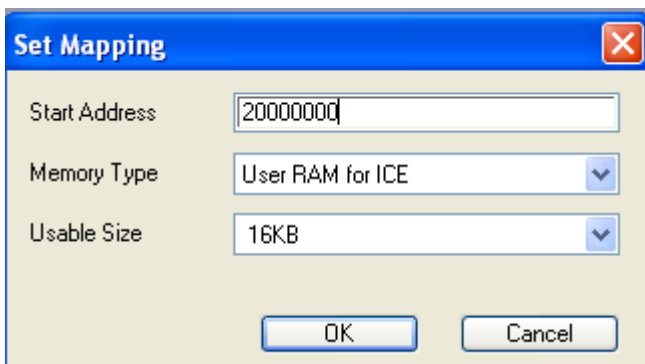
You can increase a download speed for flash memory by mapping a user RAM for ICE.

You can download to flash memory without the mapping setting though.

For User RAM for ICE, specify an area where ICE can occupy.

The following example is for when setting 16KB from 0x20000000.

For the actual settings, refer to the MPU memory map of yours.



5 Download to Flash Memory

For details, see the microVIEW-PLUS User's Manual (MPU-Specific Edition).

Details of memory mapping settings are described on this manual. Please refer to the microVIEW-PLUS User's Manual (MPU-Specific Edition) for other contents.

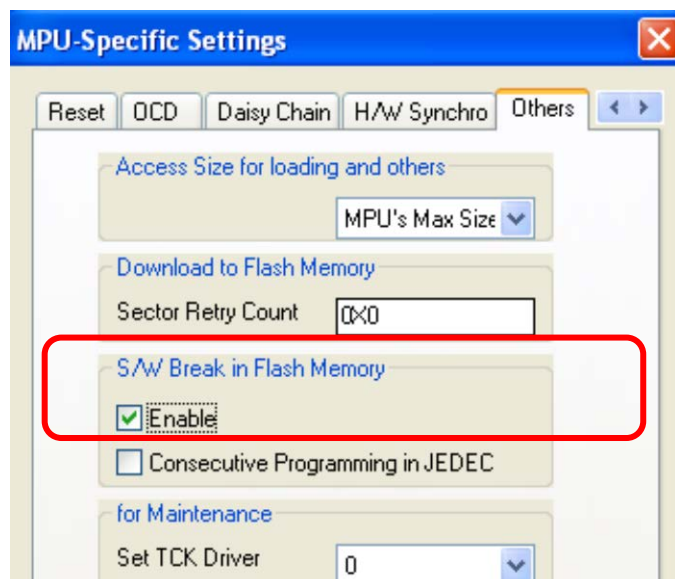
6 Software Break in Flash Memory

For details, see the microVIEW-PLUS User's Manual (MPU-Specific Edition).

Details of memory mapping settings are described on this manual. Please refer to the microVIEW-PLUS User's Manual (MPU-Specific Edition) for other contents.

You are not allowed to set up software break for flash memory in the initial state. In case you try to set up software break for flash memory in the disabled status, it results in "ICE Error No. 8c4: Set Software Break Verify Error".

To enable software break setting for flash memory, select the **Enable** checkbox of S/W Break in Flash Memory on the Others tab of the MPU-Specific Settings dialog box.



7 Notes & Points

7.1 For STM32F2/STM32F4

7.1.1 If the Debugger behavior is Slow when using a Flash Software Break

If 8bitx1 is set for the mapping, it will take 20 seconds for executing a flash software break.

However, you can make the Flash-Rom writing faster depending on the MPU power-supply voltage (VDD) level of the user system environment.

For details, see the following table.

Power-supply voltage (VDD)	Mapping setting Memory I/F Type	Flash definition file (.frd) exp_param3 set value
1.8V to 2.1V	8bit × 1	0x4FFFFFF0C
2.1V to 2.7V	8bit × 1	0x4FFFFFF0C
	16bit × 1	0x5FFFFFF0C
2.7V to 3.6V	8bit × 1	0x4FFFFFF0C
	16bit × 1	0x5FFFFFF0C
	32bit × 1	0x6FFFFFF0C

* The default value of flash definition file (.frd) is 8bit × 1 (0x4FFFFFF0C).

If the voltage conditions are unknown, please use it with the default value.

Speed of downloading and flash software breaking

8bit × 1	16bit × 1	32bit × 1
Slow	→	Fast

If you change the Memory I/F Type on the Set Mapping dialog box, make sure to change the set value of exp_param3 of the flash definition file (.frd).

After the changing, reconfigure the memory mapping in accordance with Section 4.1 “Setting up Flash Memory Mapping”.

7.1.2 For When a Time-out Error occurs

The following errors occur if the combinations of the setting of flash definition file (.frd) and the Memory I/F Type on the Set mapping dialog box are not correct.

“ICE Message No.1e4a: Time-out occurred when downloading a flash memory.”

“ICE Message No.1e48: Time-out occurred when checking a flash memory status.”

In case an error occurred, check the set value of exp_param3 of the flash definition file and the Memory I/F Type of mapping by reference to the table on the Section 7.1.1.

If you changed the setting of flash definition file, make sure to erase the mapping of flash memory on the Set Mapping dialog box.